

# EU Registry on Industrial Sites



# Scope of EU Registry on Industrial Sites

- EU Registry contains all administrative information for:
  1. E-PRTR facilities & associated sites which are subject to **Annex I** of the E-PRTR Regulation (without consideration of **Annex II** or **Article 5** thresholds)
  2. IED installations subject to **Annex I** of the IED
  3. Installation parts (either **LCP** or **waste incinerators** under the IED)
- Thematic reporting will deliver data for each of these elements:
  1. E-PRTR
  2. LCPsData required for CLRTAP LPS reporting may be reported voluntarily.

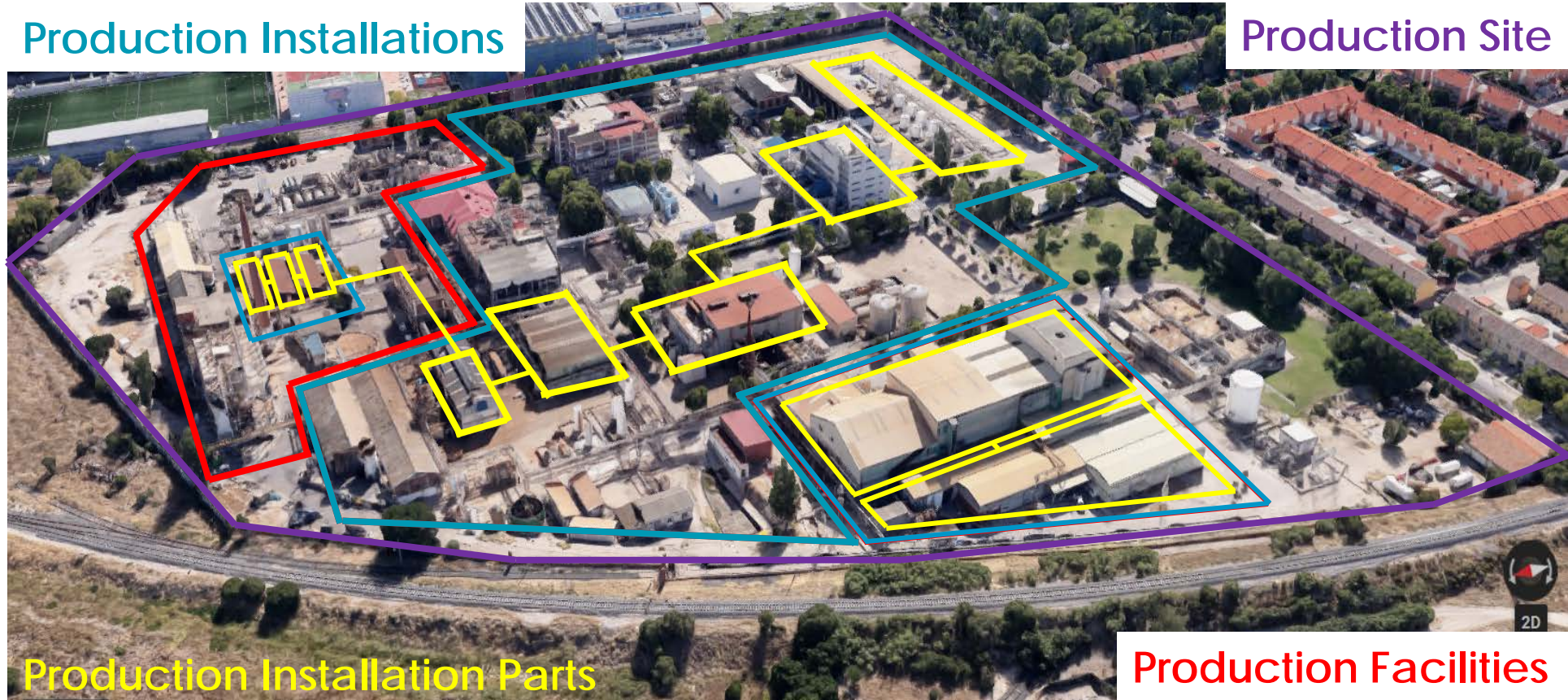
ANNEX I		
Activities		
No	Activity	Capacity threshold
1.	Energy sector	
(a)	Mineral oil and gas refineries	* (1)
(b)	Installations for gasification and liquefaction	*
(c)	Thermal power stations and other combustion installations	With a heat input of 50 megawatts (MW)
(d)	Coke ovens	*
(e)	Coal rolling mills	With a capacity of 1 tonne per hour
(f)	Installations for the manufacture of coal products and solid smokeless fuel	*
2.	Production and processing of metals	
(a)	Metal ore (including sulphide ore) roasting or sintering installations	*
(b)	Installations for the production of pig iron or steel (primary or secondary melting) including continuous casting	With a capacity of 2,5 tonnes per hour
(c)	Installations for the processing of ferrous metals:	
(i)	Hot-rolling mills	With a capacity of 20 tonnes of crude steel per hour
(ii)	Smitheries with hammers	With an energy of 50 kilojoules per hammer, where the calorific power used exceeds 20 MW
(iii)	Application of protective fused metal coats	With an input of 2 tonnes of crude steel per hour
(d)	Ferrous metal foundries	With a production capacity of 20 tonnes per day
(e)	Installations:	
(i)	For the production of non-ferrous crude metals from ore, concentrates or secondary raw materials by metallurgical, chemical or electrolytic processes	*
(ii)	For the smelting, including the alloying, of non-ferrous metals, including recovered products (refining, foundry casting, etc.)	With a melting capacity of 4 tonnes per day for lead and cadmium or 20 tonnes per day for all other metals
(f)	Installations for surface treatment of metals and plastic materials using an electrolytic or chemical process	Where the volume of the treatment vans equals 30 m <sup>3</sup>
3.	Mineral industry	
(a)	Underground mining and related operations	*
(b)	Opencast mining and quarrying	Where the surface of the area effectively under extractive operation equals 25 hectares
(c)	Installations for the production of:	
(i)	Cement clinker in rotary kilns	With a production capacity of 500 tonnes per day
(ii)	Lime in rotary kilns	With a production capacity of 50 tonnes per day
(iii)	Cement clinker or lime in other furnaces	With a production capacity of 50 tonnes per day
(d)	Installations for the production of asbestos and the manufacture of asbestos-based products	*



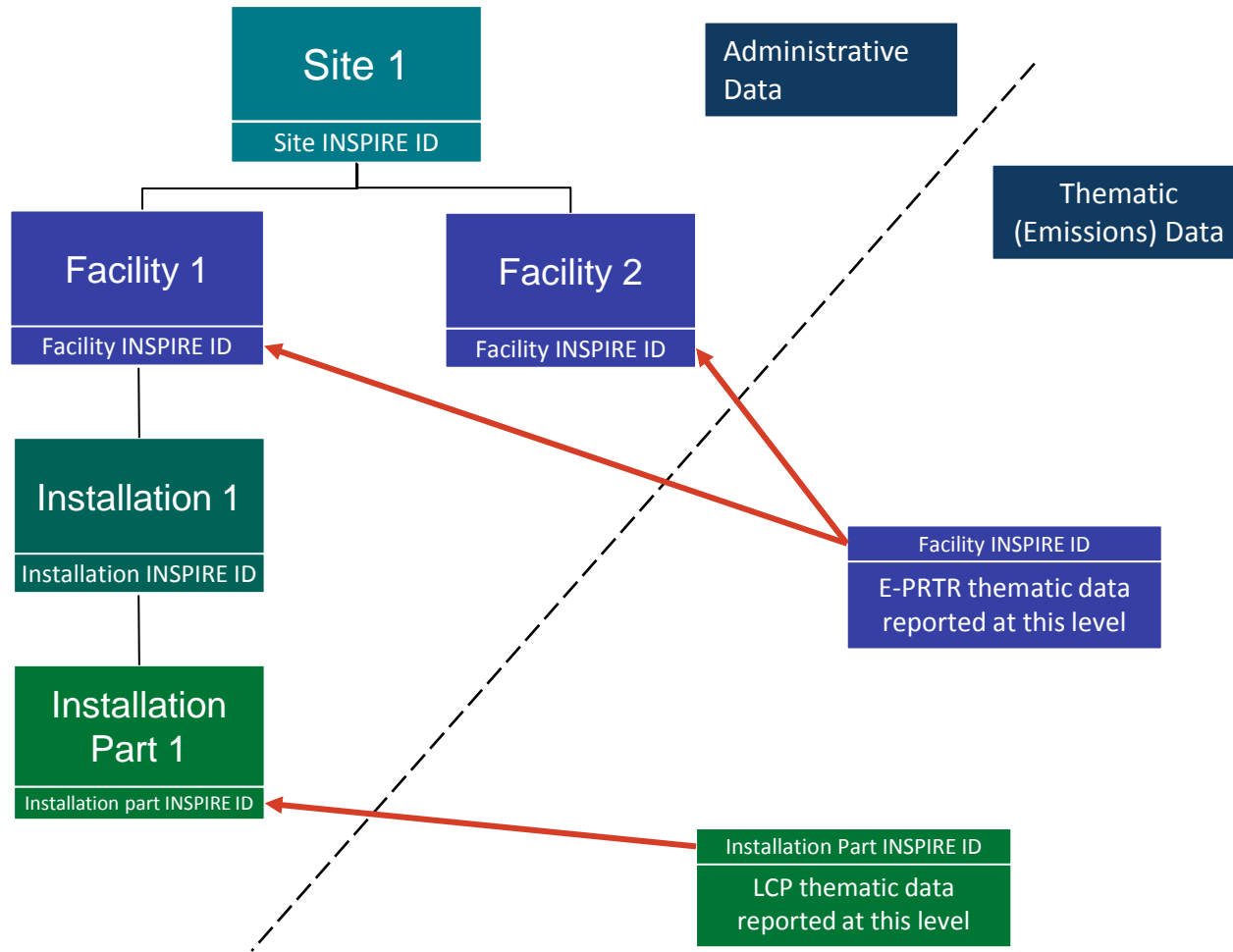
# Scope of EU Registry on Industrial Sites

Production Installations

Production Site



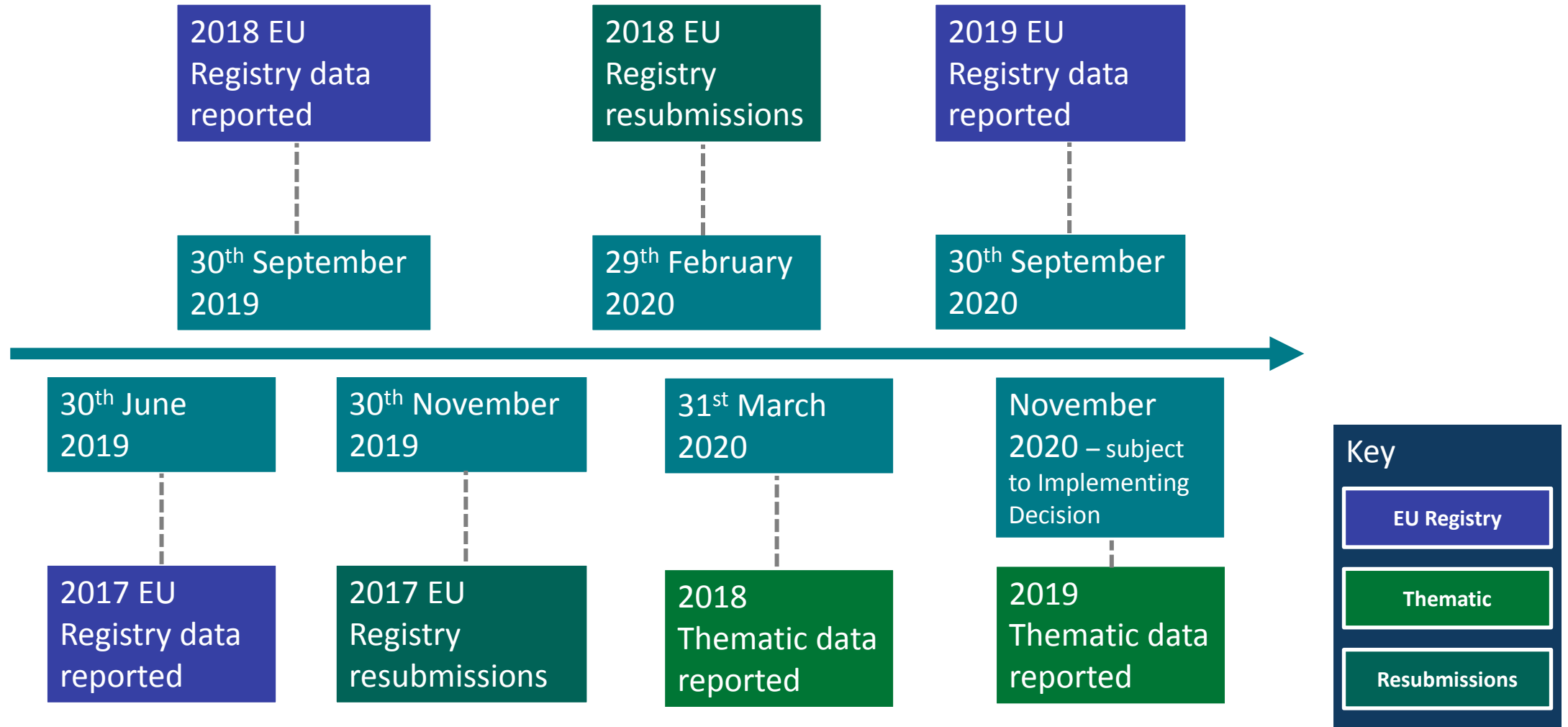
# EU Registry structure & thematic connectivity



# Why an EU Registry on Industrial Sites?

- Streamlining environmental reporting of industry
- Modular reporting infrastructure
- Inspire compliance (restricted to EU Registry)
- Enables coherent overview of industrial activities in EU
- Focus on improving data quality through automation

# Reporting Timeline



# Thanks everyone!



**European  
Environment  
Agency**

## **Bastian Zeiger**

Expert – Industry and Environment

[bastian.zeiger@eea.europa.eu](mailto:bastian.zeiger@eea.europa.eu)

Phone: +45 3336 7233

Skype: Bastian\_EEA

[eea.europa.eu/themes/industry](http://eea.europa.eu/themes/industry)